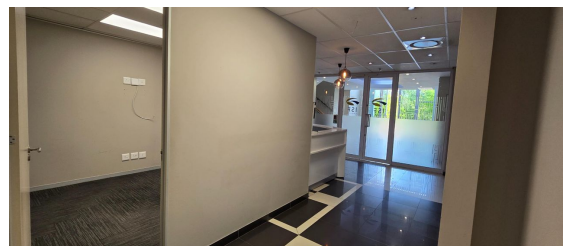
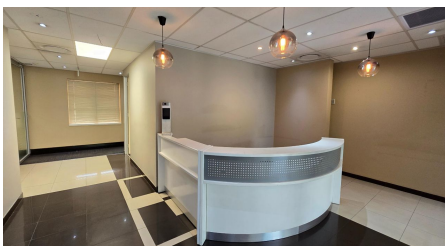
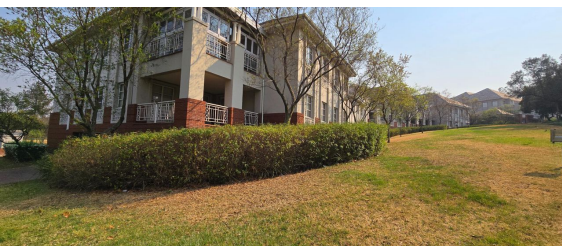




Sandton, Gauteng

Offices available for lease adjacent to Bryanston Country Club.



Turnberry Office Park offers a sophisticated and professional environment, fostering a motivating and efficient workspace. The meticulously designed ground floor office spaces cater to modern business needs, with spacious areas that can accommodate various office configurations and well-equipped open-plan workspaces. The park's beautiful outdoor setting, surrounded by lush greenery, contributes to a serene office atmosphere. It is easily accessible through two entry points—one from Cumberland and the other from Grosvenor—both monitored by security personnel and featuring manned boom gates.

Located in Bryanston, the office park provides convenient access to key business districts, transportation links, and numerous amenities. Tenants will enjoy the practical advantages of 24-hour security, backup generators, air-conditioned offices, and two balcony/patio areas. This vibrant, dynamic community fosters networking opportunities and enhances productivity, making it an ideal location for businesses seeking a collaborative and efficient work environment.

R9,000,000
excl. VAT & Utilities

FEATURES

Building Size (m ²)	525
Land Size (m ²)	525
Zoning	Commercial
Security	Yes
Open Parkings	15
Covered Parkings	7
Floor Load Capacity	
Power 3 Phase	Yes
Air Conditioning	Yes

WEB REFERENCE NO.
COM21227

Go to 3cubeproperty.co.za
for more information about this property



CONTACT
ROBIN HING

083 790 6329 / (010) 3006441
robin@3cubeproperty.co.za