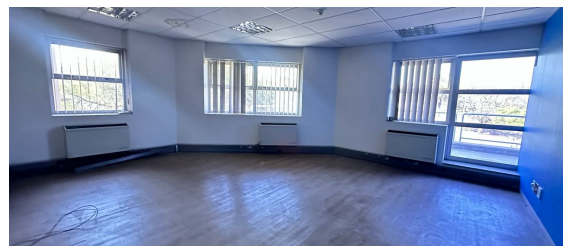
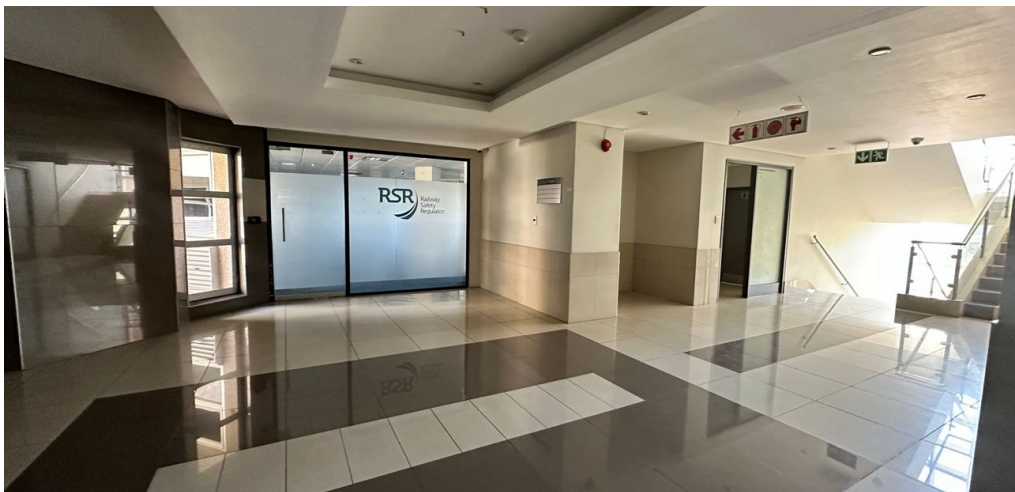
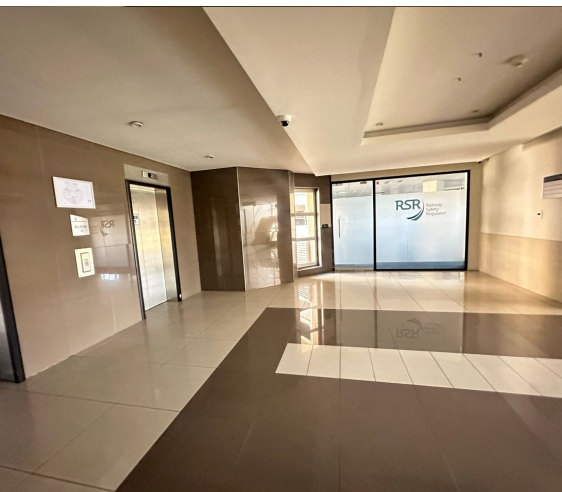




Johannesburg, Gauteng

Spacious 1,384sqm Semi-Fitted Office in Prime Parktown



This exceptional 1,384sqm semi-fitted office space in sought-after Parktown offers a versatile layout with private offices, open-plan areas, and spacious boardrooms or training rooms to suit various business needs. A fully equipped kitchen and additional amenities enhance convenience, while the prime location near public transport ensures excellent accessibility for employees and clients. Ideal for businesses seeking a well-connected and adaptable workspace, this office provides both functionality and convenience. The listed price excludes utilities, parking, generator recovery, and VAT.

R152,240 PM
excl. VAT & Utilities
price per m²: R110

FEATURES

Gross Monthly Rental Available From Lease Period	R152,240 Excl. VAT Immediately 36 months
Building Size (m ²)	1384
Zoning	Commercial
Security	Yes
Power 3 Phase	No
Air Conditioning	Yes

WEB REFERENCE NO. COM22535

Go to 3cubeproperty.co.za for more information about this property



CONTACT
LESLEY MICHAEL-THRUPP

0736095207 / (010) 3006441
lesley@3cubeproperty.co.za