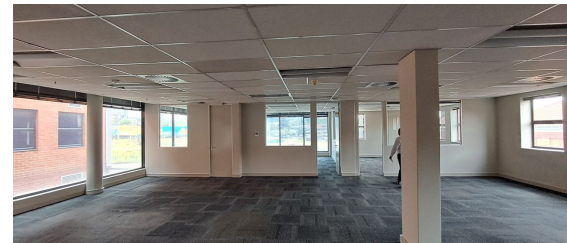




Johannesburg, Gauteng

**Modern 411m² Office Space
in Waverley with Prime
Features**



Located in the heart of Waverley, this beautifully designed 411m² first-floor office space has been recently renovated to enhance its modern appeal. Featuring an inviting open-plan layout that blends practicality with elegance, the property boasts a prestigious location with excellent convenience. Large windows allow abundant natural light to create a bright and airy atmosphere, while a reliable backup power source ensures uninterrupted operation. Exclusive basement parking is available at R650 per bay, and the Space2Spec incentive offers tenants the opportunity to personalize their workspace, making this an ideal choice for businesses seeking a stylish and functional office.

R49,320 PM

excl. VAT & Utilities

price per m²: R120

FEATURES

Gross Monthly Rental Available From Lease Period	R49,320 Excl. VAT Immediately Negotiable
Building Size (m ²)	411
Zoning	Commercial
Security	Yes
Power 3 Phase	Yes
Air Conditioning	Yes

**WEB REFERENCE NO.
COM23187**

Go to 3cubeproperty.co.za
for more information about this property



CONTACT
ILAN SEGAL

☎ 078 566 9964 / (010) 3006441

✉ ilan@3cubeproperty.co.za