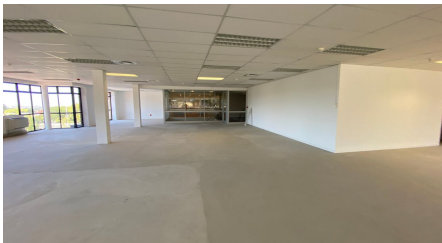




Parow, Western Cape

Spacious 1087m² office in Platteklouf 3, Parow, perfect for your business needs and future growth!



The office park is located in an affluent suburb at the foothill of the Tygerberg Nature Reserve, offering a harmonious blend of residential, lifestyle, and shopping areas. Positioned away from city traffic, it provides easy access to the N1 and is close to the N7. With nearby amenities such as Planet Fitness Gym, Medi Clinic, shopping centers, colleges, and schools, this location offers both convenience and tranquility. The park is equipped with 24/7 security, backup generators, CCTV surveillance, and secure access, making it a great alternative to the busy Century City. The stunning views of Table Mountain further enhance its appeal.

This second-floor office space spans 1,087 sqm and is available for rent at R165 per square meter. It offers a spacious, well-secured environment in a prime location, ideal for businesses seeking a peaceful yet well-connected setting.

R179,355 PM
excl. VAT & Utilities
price per m²: R165

FEATURES

Gross Monthly Rental Available From Lease Period	R179,355 Excl. VAT Immediately 36 months
Building Size (m ²)	1087
Zoning	Commercial
Security	Yes
Power 3 Phase	No
Air Conditioning	Yes

WEB REFERENCE NO. COM22480

Go to 3cubeproperty.co.za for more information about this property



CONTACT
LORENZO FISHER

068 754 0443 / (021) 5699697
lorenzo@3cubeproperty.co.za