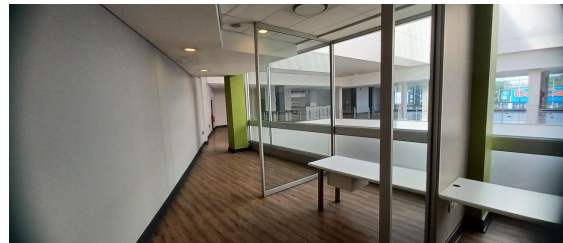


Sandton, Gauteng

Prime Retail Space Available at Lancaster Shopping Centre, Hyde Park



Lancaster Shopping Centre, located at 369 Jan Smuts Avenue in Hyde Park, offers a prime and easily accessible retail destination. Covering approximately 2,355m², the centre is home to a diverse range of shops and is ideally positioned near office parks and key amenities such as the Hyde Park Shopping Centre, The Colony, and a nearby hotel. Its excellent public transport connections along major roads further improve accessibility for both shoppers and businesses.

In addition to its retail spaces, Lancaster Shopping Centre provides ample parking, including convenient underground options for easy access. The centre is also home to a Pick n Pay and a selection of delightful dining establishments, creating a vibrant hub for both shopping and leisure.

R341,475 PM
excl. VAT & Utilities
 price per m²: R145

FEATURES

Gross Monthly Rental Available From Lease Period	R341,475 Excl. VAT Immediately Negotiable
Building Size (m ²)	2355
Zoning	Commercial
Security	Yes
Power 3 Phase	Yes
Air Conditioning	Yes

WEB REFERENCE NO. COM21906

Go to 3cubeproperty.co.za for more information about this property



CONTACT
ILAN SEGAL

078 566 9964 / (010) 3006441
ilan@3cubeproperty.co.za