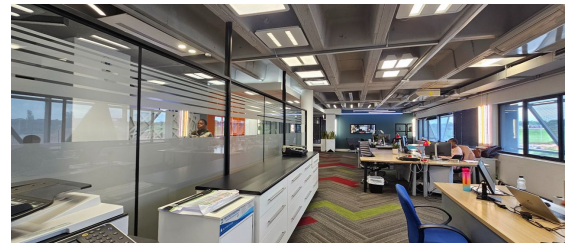
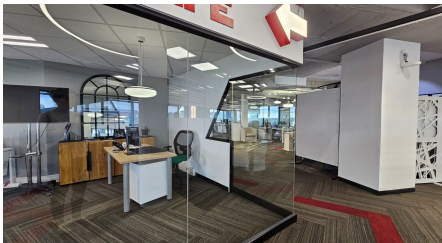
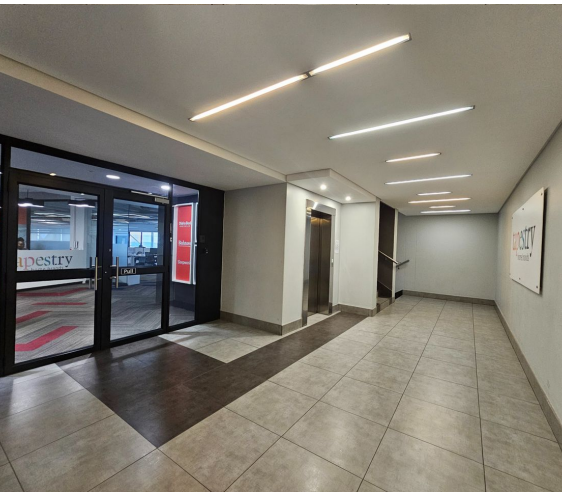
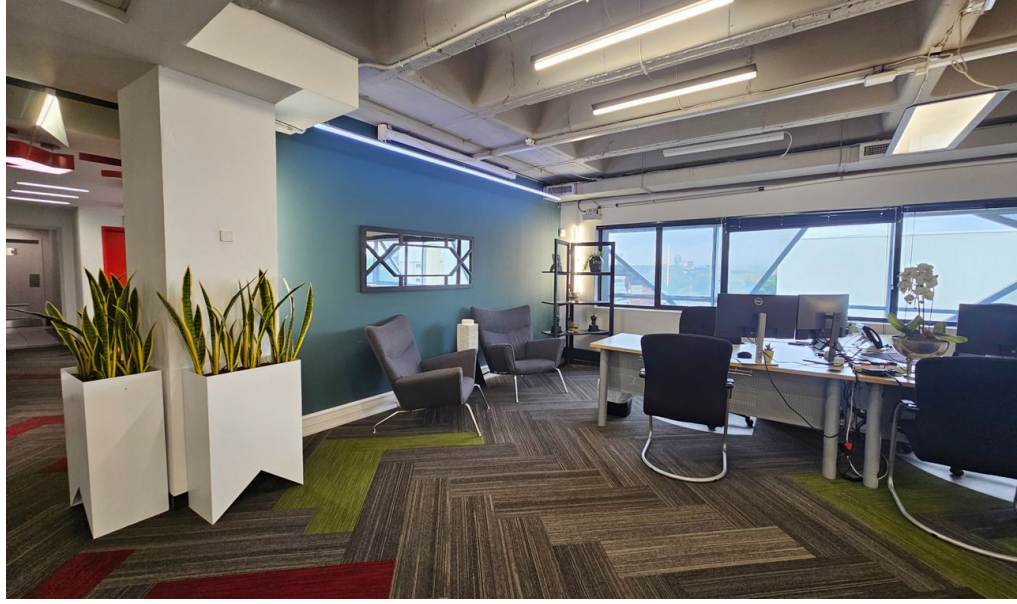


Sandton, Gauteng

Stunning Fitted A-Grade,
Prime Office Space Available
TO LET in Kramerville,
Sandton



A-Grade office space, located on the first floor, within a prime building in Kramerville. The space boasts a modern fitout, elevator access, backup power and 24-hour security. There are also signage opportunities onto Marlboro Drive at an additional cost. Basement, covered and open parking bays at a rate of R900 per bay. Available 1 August 2025.

Kramerville has changed dramatically over the years evolving from an industrial node to the creative design district it is today, pulling interior designers in from near and far. Ideally located a stone's throw from Sandton central with quick access to the M1 highway, as well as the N3.

R97,890 PM

excl. VAT & Utilities

price per m²: R130

FEATURES

Gross Monthly Rental Available From Lease Period	R97,890 Excl. VAT Aug. 1, 2025 36 months
Building Size (m ²)	735
Zoning	Commercial
Security	Yes
Power 3 Phase	No
Air Conditioning	Yes

WEB REFERENCE NO.
COM23029

Go to 3cubeproperty.co.za
for more information about this property



CONTACT
CASSANDRA DELACOVIA

071 895 8267 / (010) 3006441

cassie@3cubeproperty.co.za