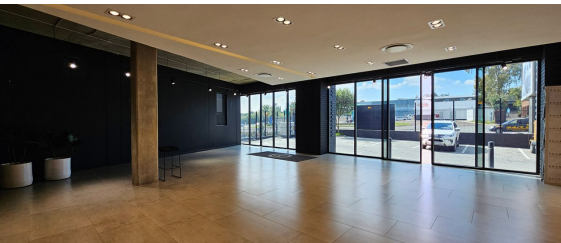




Sandton, Gauteng

Versatile Ground Floor Showroom With Prime Exposure In Kramerville



This exceptional showroom space is situated on the ground floor of a prominent building in Kramerville, offering prime main road frontage along Bowling Road. With excellent signage opportunities, this fully fitted space can be easily adapted to suit a variety of showroom uses, including cars, furniture, or homeware. The location provides high visibility and easy accessibility, making it ideal for businesses seeking exposure in a dynamic area.

Kramerville has undergone significant transformation, evolving from an industrial hub to a thriving creative design district. Today, it attracts interior designers and design professionals from all over. The property is ideally positioned just a stone's throw from Sandton Central, with quick access to both the M1 and N3 highways, ensuring convenience and connectivity for both clients and businesses.

R126,240 PM
excl. VAT & Utilities
price per m²: R160

FEATURES

Gross Monthly Rental Available From	R126,240 Excl. VAT
Lease Period	Immediately
	36 months
Building Size (m ²)	789
Zoning	Commercial
Security	No
Power 3 Phase	No
Air Conditioning	No

WEB REFERENCE NO.
COM21649

Go to 3cubeproperty.co.za
for more information about this property



CONTACT
CASSANDRA DELACOVIA

071 895 8267 / (010) 3006441
cassie@3cubeproperty.co.za