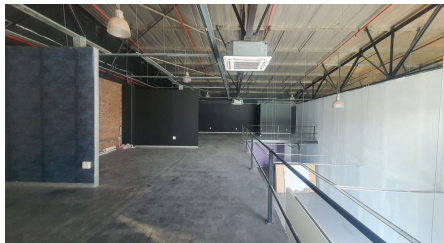
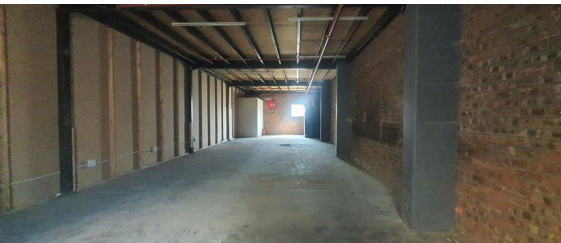
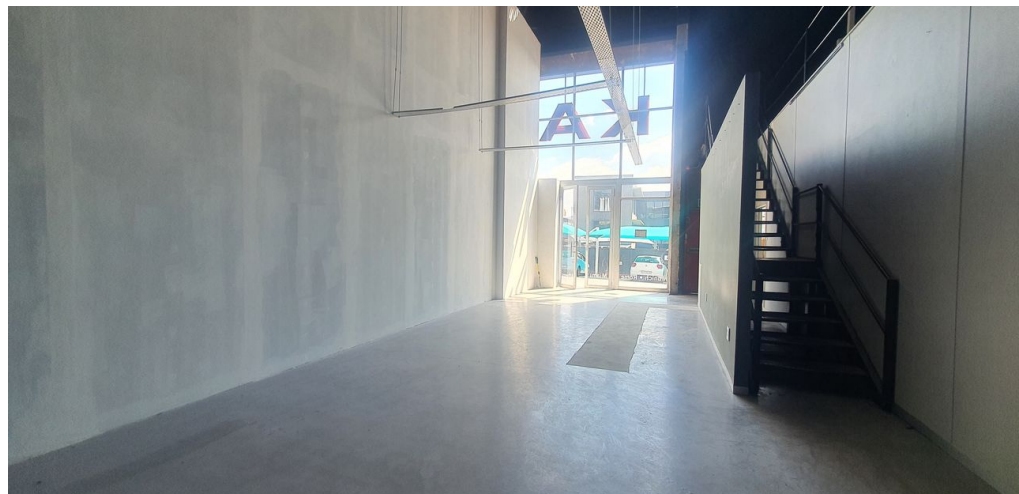




Sandton, Gauteng

Prime Ground Floor
Showroom With Warehousing
And Mezzanine Available In
Trendy Kramerville



A stunning ground floor showroom space is now available for immediate rent in the vibrant Kramerville area. This versatile property offers a spacious ground floor showroom, complemented by convenient onsite warehousing and a stylish mezzanine. With excellent visibility and prime frontage onto the main road, the location is ideal for businesses seeking high exposure and an impressive presence.

Kramerville has experienced a remarkable transformation in recent years, evolving from an industrial hub into Johannesburg's premier creative design district. The area now draws interior designers, architects, and creatives, making it a highly sought-after destination for design-focused businesses. Conveniently located just minutes from Sandton Central, with easy access to the M1 and N3 highways, this property offers exceptional connectivity to key commercial hubs throughout the city.

R42,837 PM

excl. VAT & Utilities

price per m²: R115

FEATURES

Gross Monthly Rental Available From	R42,837 Excl. VAT
Lease Period	Immediately 36 months
Building Size (m ²)	372
Zoning	Commercial
Security	No
Power 3 Phase	No
Air Conditioning	No

WEB REFERENCE NO.
COM21672

Go to 3cubeproperty.co.za
for more information about this property



CONTACT
CASSANDRA DELACOVIA

☎ 071 895 8267 / (010) 3006441

✉ cassie@3cubeproperty.co.za