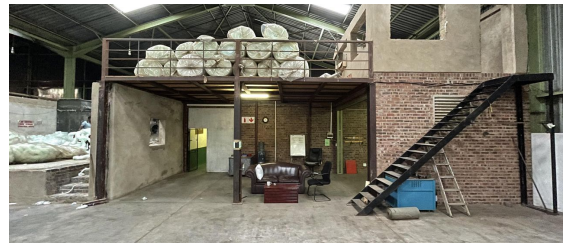
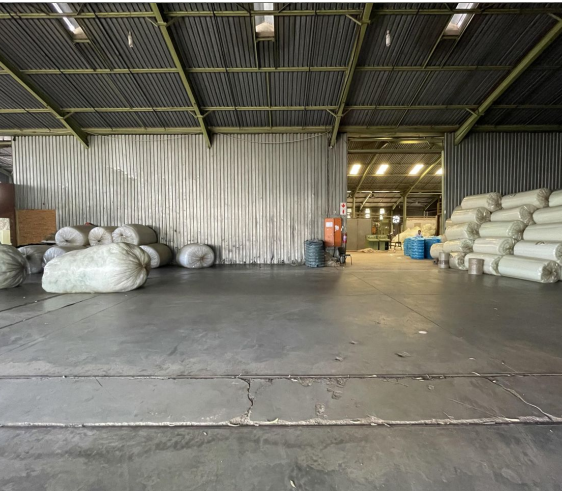




Johannesburg, Gauteng

Spacious 3,700m² Industrial Property To Let in Prolecon



This versatile freestanding industrial facility offers an impressive 3,700m² of space, featuring abundant natural light and excellent height to the eaves, making it suitable for a wide range of warehousing, factory, or mixed-use operations. The property comes equipped with a high supply of three-phase power and gas, ensuring it can handle energy-intensive activities with ease. It includes two neat office spaces, one of which has a mezzanine level, as well as well-maintained ablution facilities for added convenience.

Strategically located near major transport routes including the M2, M1, N3, and N12, this property ensures seamless logistics and easy accessibility. With multiple roller shutter doors and ample maneuverability, it is designed to accommodate smooth loading, unloading, and overall operational efficiency.

R15,000,000
excl. VAT & Utilities

FEATURES

Building Size (m ²)	3700
Land Size (m ²)	4774
Zoning	Industrial
Security	No

Power 3 Phase	Yes
Air Conditioning	No

WEB REFERENCE NO.
COM21167

Go to 3cubeproperty.co.za
for more information about this property



CONTACT
SAM PEARSON

☎ 082 749 7530 / (010) 3006441

✉ sam@3cubeproperty.co.za