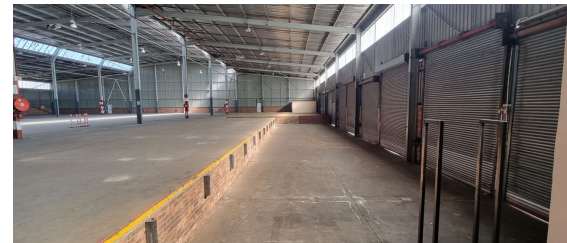
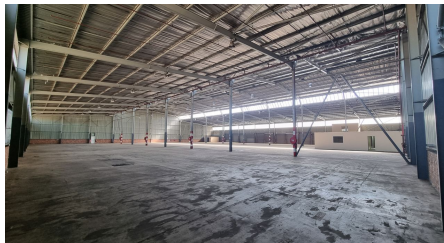
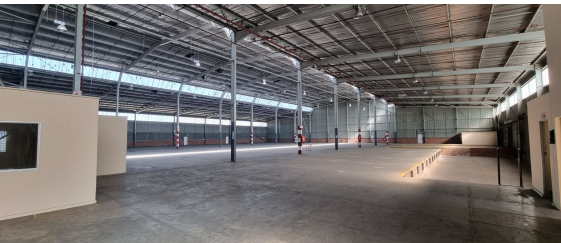
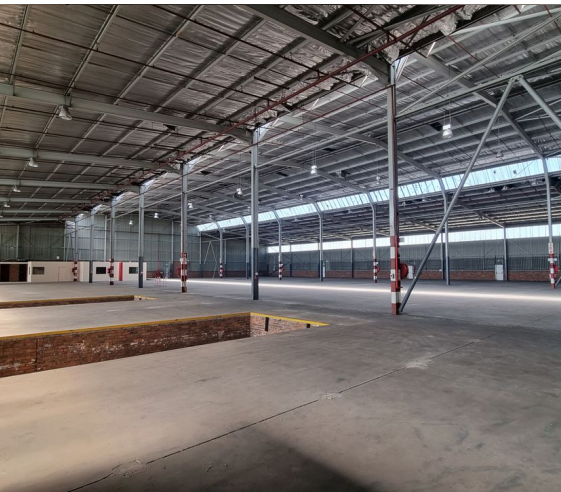




Boksburg, Gauteng

**SPACIOUS 4000SQM
WAREHOUSE FACILITY TO
RENT IN JET PARK**



This expansive 4000sqm warehouse facility in the highly sought-after industrial hub of Jet Park is an ideal space for warehousing, manufacturing, or mixed-use business operations. Boasting excellent height, multiple large roller shutter doors, and ample natural light, the warehouse is designed for maximum efficiency. The large exclusive paved yard ensures easy truck access and maneuverability, making logistics seamless. The premises include minimal office space, complete with kitchen and toilet facilities, catering to operational needs without excessive office overheads. Equipped with 3-phase power, a full overhead sprinkler system, and a security booth, this facility is well-prepared to support high-demand industrial activities. Additionally, its prominent main road exposure enhances visibility for businesses. Strategically located with quick and easy access to the N12 and R21 highways, as well as OR Tambo International Airport, this property offers unparalleled connectivity to major transport routes, essential services, and surrounding industrial nodes.

R272,000 PM
excl. VAT & Utilities
price per m²: R68

WEB REFERENCE NO.
COM22522

Go to 3cubeproperty.co.za
for more information about this property



FEATURES

Gross Monthly Rental Available From Lease Period	R272,000 Excl. VAT Negotiable Negotiable
Building Size (m ²)	4000
Land Size (m ²)	7700
Zoning	Industrial
Security	No
Power 3 Phase	Yes
Power Amps	150
Air Conditioning	Yes

CONTACT
MICHAEL LABRAM

☎ 079 353 4669 / (010) 3006441
✉ michael@3cubeproperty.co.za