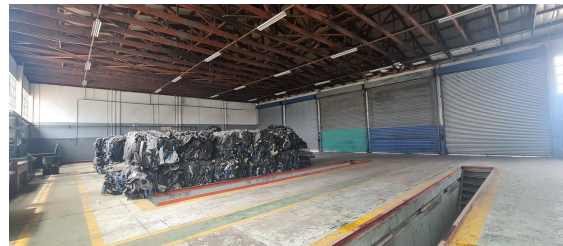




**Germiston, Gauteng**

**Industrial Truck Yard TO LET  
in Elandsfontein**



This 1,800sqm facility is situated on a 10,000sqm stand, making it ideal for truck yards or transporter operations. The property features truck pits, wash bays, and on-site tanks, ensuring efficiency for fleet management. A neat office component with ample staff parking is included. The massive yard space allows for super link access and excellent turning capacity. Multiple roller shutter doors provide seamless logistics, and the location offers easy access to the N12 Atlas Road offramp.

**R190,000 PM**  
**excl. VAT & Utilities**  
price per m<sup>2</sup>: R105

**WEB REFERENCE NO.**  
**COM22501**

Go to [3cubeproperty.co.za](http://3cubeproperty.co.za)  
for more information about this property



**FEATURES**

Gross Monthly Rental Available From	R190,000 Excl. VAT
Lease Period	Negotiable
Building Size (m <sup>2</sup> )	1800
Land Size (m <sup>2</sup> )	10000
Zoning	Industrial
Security	Yes
Power 3 Phase	Yes
Power Amps	200
Air Conditioning	Yes

**CONTACT**  
**MARIO GUALTIERI**

 076 524 5870 / (010) 3006441

 [mario@3cubeproperty.co.za](mailto:mario@3cubeproperty.co.za)