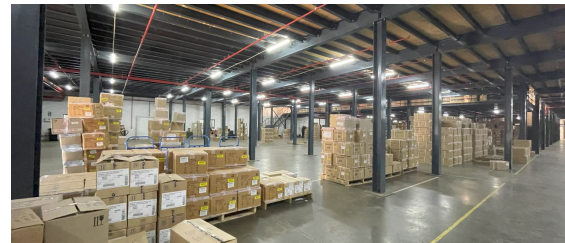


Germiston, Gauteng

**17,928m² Distribution
Facility TO LET in Gosforth
Park**



Located in the sought-after Gosforth Park industrial node, this prime 17,928m² facility is perfect for warehousing and distribution, offering easy access to major highways (N1, N3, N17, and M2). The warehouse includes a mezzanine level with conveyor systems, multiple roller shutter doors (both on-grade and dock-height access), and a modern office component. Equipped with backup water tanks and a full sprinkler system, this facility ensures efficiency and safety. The property can also be split into two separate units of 9,655m² and 8,273m² to suit different operational needs.

R1,135,320 PM

excl. VAT & Utilities

price per m²: R63

FEATURES

Gross Monthly Rental R1,135,320 Excl. VAT
Available From Negotiable
Lease Period 36 months

Building Size (m²) 17928
Land Size (m²) 19600
Zoning Industrial
Security No


Power 3 Phase Yes
Air Conditioning Yes


**WEB REFERENCE NO.
COM22013**

Go to 3cubeproperty.co.za
for more information about this property



CONTACT
SAM PEARSON

 082 749 7530 / (010) 3006441

 sam@3cubeproperty.co.za