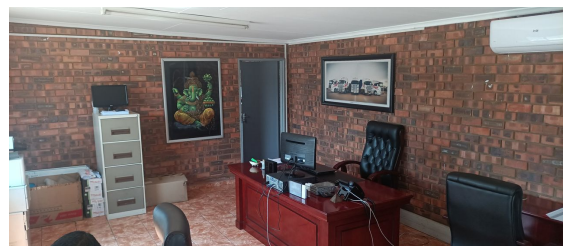


Germiston, Gauteng

Prime Industrial Property TO LET in Jupiter, Germiston



This versatile industrial property in a secure business park offers 590m² of warehouse space, 100m² of office space, and fully equipped staff ablutions. The 4,000m² paved yard provides ample room for vehicle maneuvering, storage, or expansion. Located in a highly sought-after area, this property ensures easy access to the M3 and N2 highways, with close proximity to Gosforth Park, making it an excellent choice for logistics and distribution businesses.

R95,000 PM
excl. VAT & Utilities
price per m²: R137

FEATURES

Gross Monthly Rental Available From Lease Period	R95,000 Excl. VAT Negotiable Negotiable
Building Size (m ²) Zoning Security	690 Industrial No
Power 3 Phase Air Conditioning	No No

WEB REFERENCE NO.
COM22015

Go to 3cubeproperty.co.za
for more information about this property



CONTACT
SAM PEARSON

082 749 7530 / (010) 3006441
sam@3cubeproperty.co.za