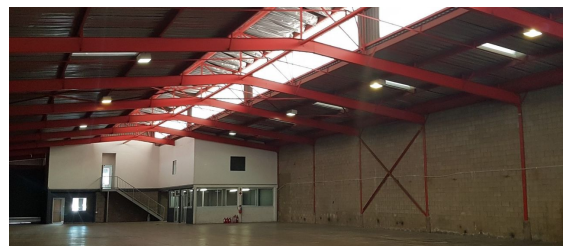
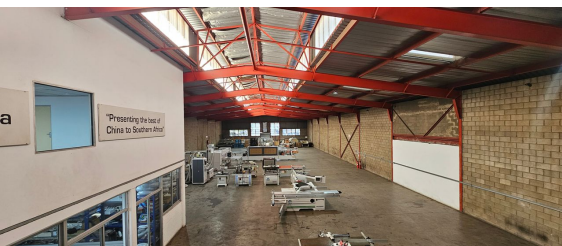


**Germiston, Gauteng**

**Prime Property for Lease in Meadowdale**



Discover an exceptional leasing opportunity in the highly desirable area of Meadowdale. This versatile property is designed to meet a range of commercial and industrial needs, offering spacious warehousing, efficient office layouts, and top-tier amenities to support seamless operations.

Situated within close proximity to major highways and transport routes, this property ensures excellent accessibility for logistics and distribution. Meadowdale's thriving business hub provides an ideal setting for businesses looking to expand or relocate in a secure and strategically located environment.

**R81,120 PM**

**excl. VAT & Utilities**

price per m<sup>2</sup>: R65

**FEATURES**


Gross Monthly Rental Available From Lease Period	R81,120 Excl. VAT Negotiable Negotiable
Building Size (m <sup>2</sup> )	1248
Land Size (m <sup>2</sup> )	3910
Zoning	Industrial
Security	Yes
Power 3 Phase	Yes
Power Amps	100
Air Conditioning	Yes

**WEB REFERENCE NO.**  
**COM20588**

Go to [3cubeproperty.co.za](http://3cubeproperty.co.za)  
for more information about this property



**CONTACT**  
**MARIO GUALTIERI**

 076 524 5870 / (010) 3006441

 [mario@3cubeproperty.co.za](mailto:mario@3cubeproperty.co.za)