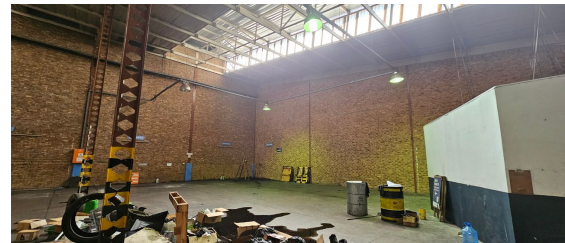
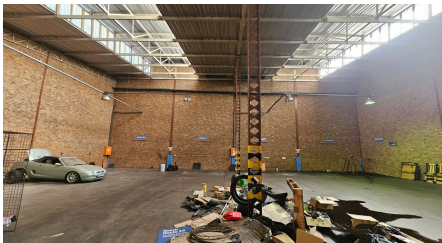
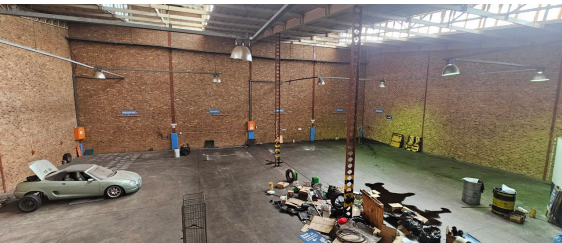
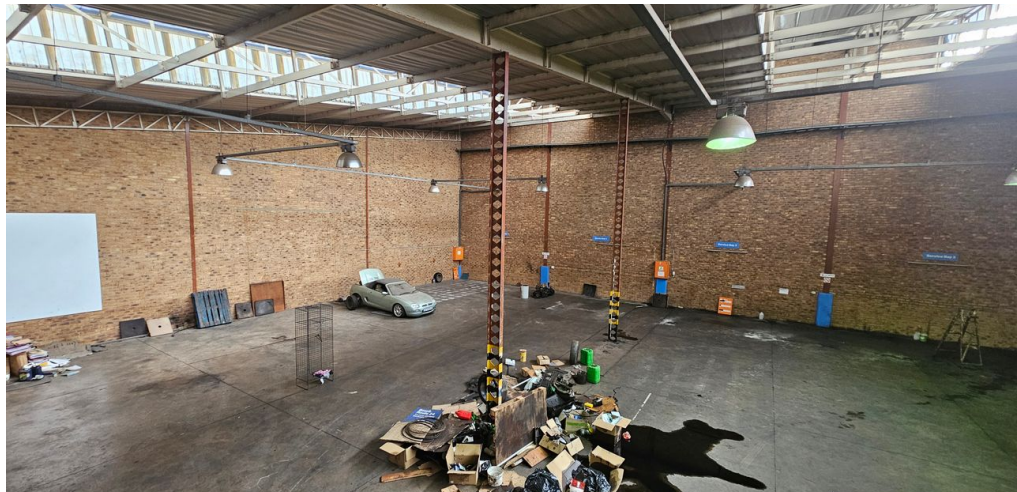


Germiston, Gauteng

Industrial property TO LET in Meadowdale



Introducing this prime industrial property located in the bustling industrial hub of Meadowdale. This expansive 666m² warehouse offers a fantastic opportunity for businesses looking to establish or expand their operations in a strategic location. The property boasts a well-maintained structure, ideal for various industrial purposes. Some of the standout features of this property are the warehouse height, natural lighting and superlink access, which is essential for making it suitable for manufacturing, distribution, or storage purposes.

In addition to the 3-phase power supply, this warehouse industrial property in Meadowdale also offers ample space for storage, loading, and unloading activities. The open layout and high ceilings provide flexibility for businesses to customize the space according to their specific needs. With easy access to major transportation routes and nearby amenities, this property presents a rare opportunity for businesses to thrive in a dynamic and well-connected industrial environment. This ensures that businesses have the necessary infrastructure in place to operate efficiently and effectively

R38,554 PM
excl. VAT & Utilities
price per m²: R55

FEATURES

Gross Monthly Rental Available From Lease Period	R38,554 Excl. VAT Immediately Negotiable
Building Size (m ²)	701
Land Size (m ²)	701
Zoning	Industrial
Security	Yes
Power 3 Phase	Yes
Power Amps	63
Air Conditioning	Yes

WEB REFERENCE NO. COM21062

Go to 3cubeproperty.co.za for more information about this property



CONTACT
MARIO GUALTIERI

☎ 076 524 5870 / (010) 3006441

✉ mario@3cubeproperty.co.za