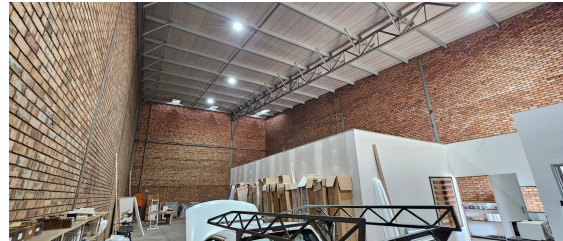
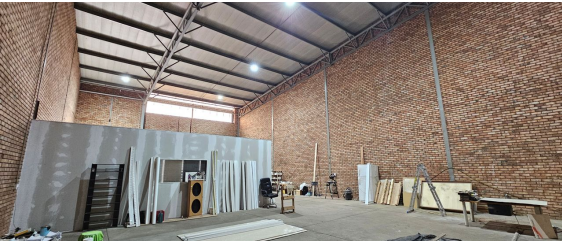
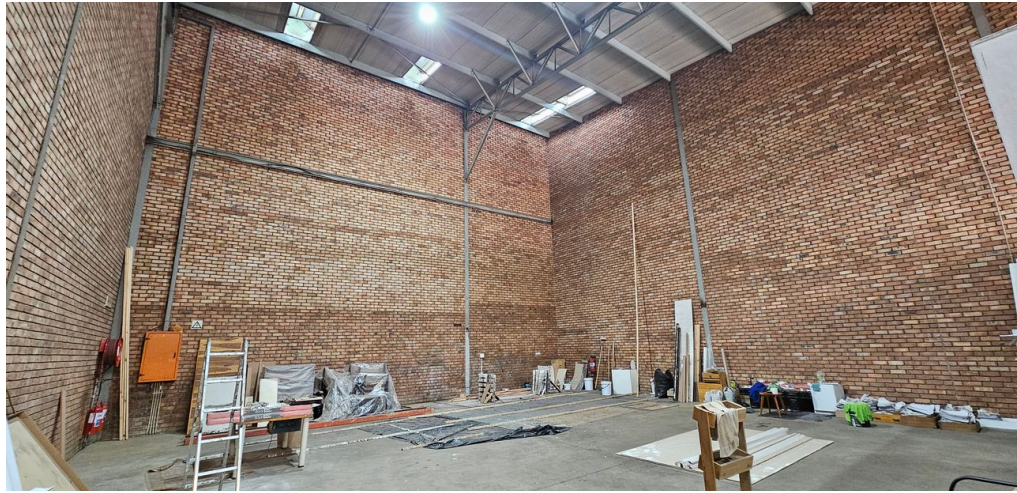


Germiston, Gauteng

Neat mini unit available TO
LET in Meadowdale



This 306sqm warehouse is now available TO LET in Meadowdale. The property is ideal for businesses in need of space for warehousing and / or retail operations, with a functional layout designed to accommodate both. There is 1 large roller shutter door leading into the warehouse with excellent height available and decent natural lighting.

The business park allows for great truck access and articulation with the warehouse location ensuring easy access to major highways, including the R24 and N12, making it highly convenient for logistics and transportation. Meadowdale is currently on a priority grid meaning there is NO LOADSHEDDING.

R29,019 PM
excl. VAT & Utilities
price per m²: R95

FEATURES

Gross Monthly Rental Available From Lease Period	R29,019 Excl. VAT Immediately Negotiable
Building Size (m ²)	306
Land Size (m ²)	306
Zoning	Industrial
Security	Yes
Power 3 Phase	Yes
Power Amps	60
Air Conditioning	Yes

WEB REFERENCE NO. COM21431

Go to 3cubeproperty.co.za
for more information about this property



CONTACT
MARIO GUALTIERI

☎ 076 524 5870 / (010) 3006441
✉ mario@3cubeproperty.co.za