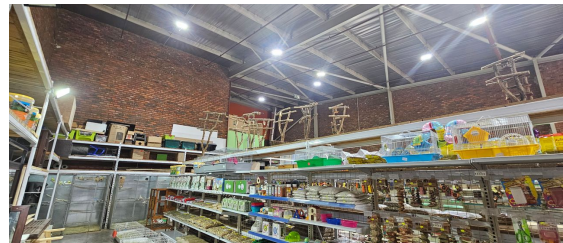
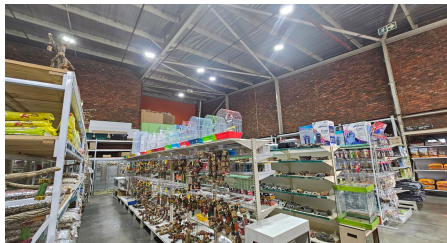
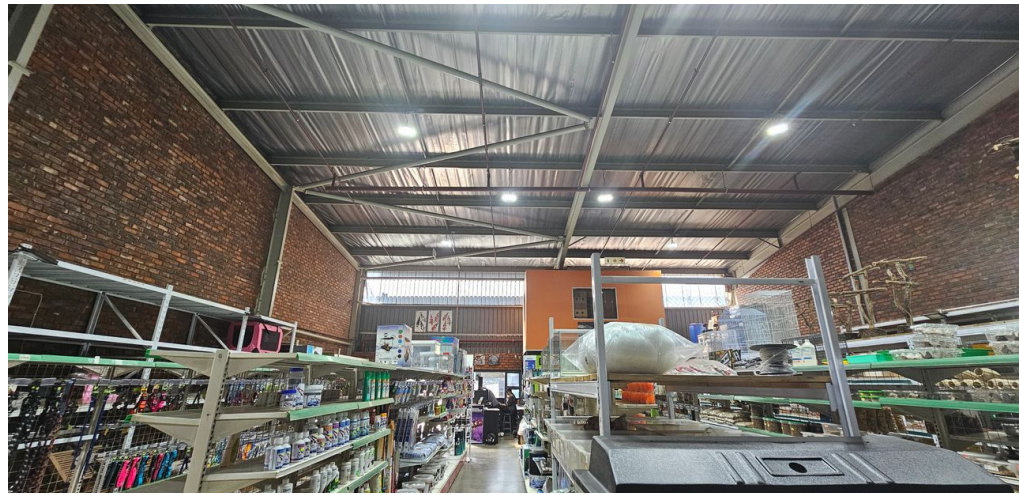


Germiston, Gauteng

363sqm Warehouse for Lease in Prime Meadowdale Location



This 363sqm warehouse in Meadowdale, Germiston, is an excellent opportunity for businesses seeking a versatile space with prime main road exposure. Strategically located near the R24 and N12 highways, the property offers convenient access and visibility, making it ideal for warehousing or retail operations. The functional layout is designed for practicality, complemented by onsite parking for staff and visitors. Occupation is available from 1 March 2025, providing ample time for planning your business move.

Situated in Meadowdale, a thriving business hub, this warehouse ensures high visibility for customer engagement while being close to local amenities, including shopping centers, restaurants, and fitness facilities. With a competitive rental rate of R95/sqm (excluding VAT and utilities), this property combines value and functionality, making it an attractive option for growing businesses.

R34,485 PM

excl. VAT & Utilities

price per m²: R95

FEATURES

Gross Monthly Rental R34,485 Excl. VAT
Available From March 1, 2025
Lease Period Negotiable

Building Size (m²) 363
Zoning Industrial
Security No


Power 3 Phase No
Air Conditioning No


WEB REFERENCE NO.
COM21683

Go to 3cubeproperty.co.za
for more information about this property



CONTACT
MARIO GUALTIERI

 076 524 5870 / (010) 3006441

 mario@3cubeproperty.co.za