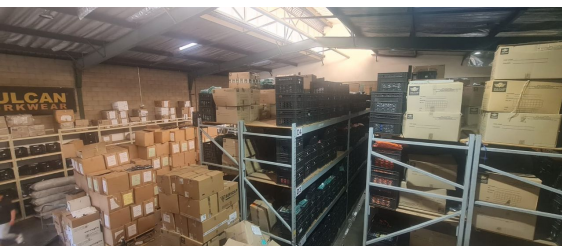
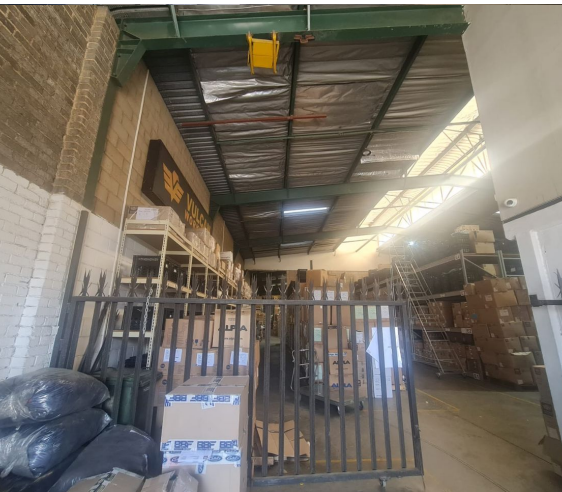


Germiston, Gauteng

Prime Industrial Property TO RENT in Meadowdale



This well-maintained property offers excellent main road visibility within a secure business park featuring 24-hour security and controlled access. The complex provides ample parking and easy access to major highways. The warehouse boasts impressive height, a roller shutter door for seamless access, and an 80-amp three-phase power supply. Additional features include double-volume space, multiple office areas, male and female restrooms, and a kitchenette.

R22,990 PM
excl. VAT & Utilities
price per m²: R55

FEATURES

Gross Monthly Rental Available From Lease Period	R22,990 Excl. VAT Negotiable Negotiable
Building Size (m ²)	418
Land Size (m ²)	418
Zoning	Industrial
Security	Yes
Power 3 Phase	Yes
Power Amps	60
Air Conditioning	Yes

WEB REFERENCE NO. COM22500
Go to 3cubeproperty.co.za
for more information about this property



CONTACT
MARIO GUALTIERI

☎ 076 524 5870 / (010) 3006441
✉ mario@3cubeproperty.co.za