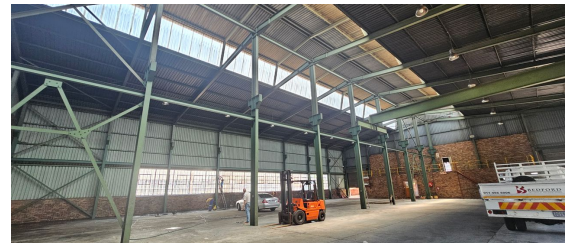
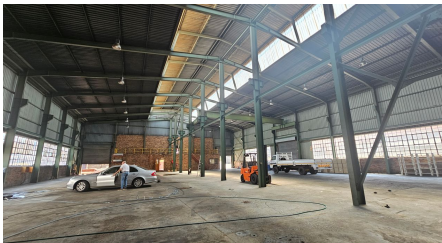
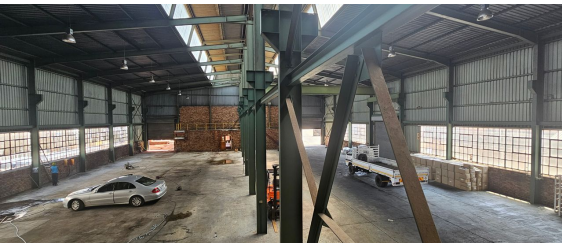


**Germiston, Gauteng**

Neat stand alone building  
available TO LET!



This neat 1800sqm stand alone property is now available TO LET on a 2500sqm stand. The warehouse boasts great height and excellent natural lighting. There are 3 roller shutter doors leading into the facility with 150amps of three phase power available. This property has the facility to add cranes if required.

There is a double storey office component located at the front of property with a boardroom and kitchenette facilities available. There is also a mezzanine floor at the back of the warehouse which is accessible via a forklift. This property is located within close proximity to the N12 highway between Edenvale and Bedfordview.

**R126,000 PM**  
excl. VAT & Utilities  
price per m<sup>2</sup>: R70

**FEATURES**

Gross Monthly Rental Available From Lease Period	R126,000 Excl. VAT Immediately Negotiable
Building Size (m <sup>2</sup> )	1800
Land Size (m <sup>2</sup> )	2500
Zoning	Industrial
Security	Yes
Power 3 Phase	Yes
Power Amps	125
Air Conditioning	Yes

WEB REFERENCE NO.  
**COM21665**  
Go to [3cubeproperty.co.za](http://3cubeproperty.co.za)  
for more information about this property



**CONTACT**  
**MARIO GUALTIERI**  
076 524 5870 / (010) 3006441  
mario@3cubeproperty.co.za