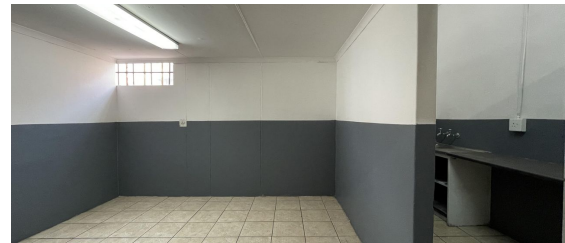
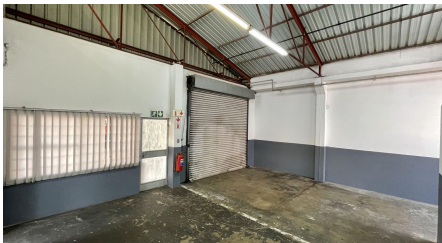




Johannesburg, Gauteng

Prime Industrial Space with Mezzanine Level TO LET in Steeledale



This versatile industrial unit in a secure business park offers open-plan workspace with an additional mezzanine level. Featuring a large roller shutter door, 60-amp three-phase power, and good height to the eaves, it is ideal for various industrial operations. The property includes workspace-level ablution facilities, a paved yard for single trailer truck access, and ample open parking. Conveniently located between the N12 and N17, with close proximity to the N3 highway, this unit provides excellent accessibility for logistics and operations.

R8,400 PM

excl. VAT & Utilities

price per m²: R56

FEATURES

Gross Monthly Rental R8,400 Excl. VAT
Available From Immediately
Lease Period 12 months

Building Size (m²) 150
Zoning Industrial
Security Yes

Power 3 Phase Yes
Power Amps 60
Air Conditioning No

WEB REFERENCE NO.
COM22014

Go to 3cubeproperty.co.za
for more information about this property



CONTACT
SAM PEARSON

082 749 7530 / (010) 3006441

sam@3cubeproperty.co.za