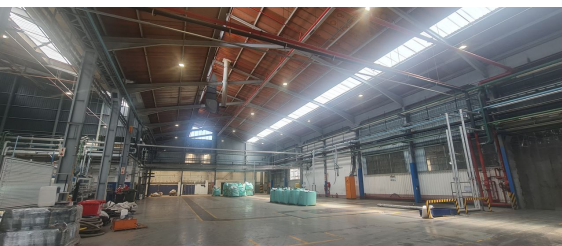
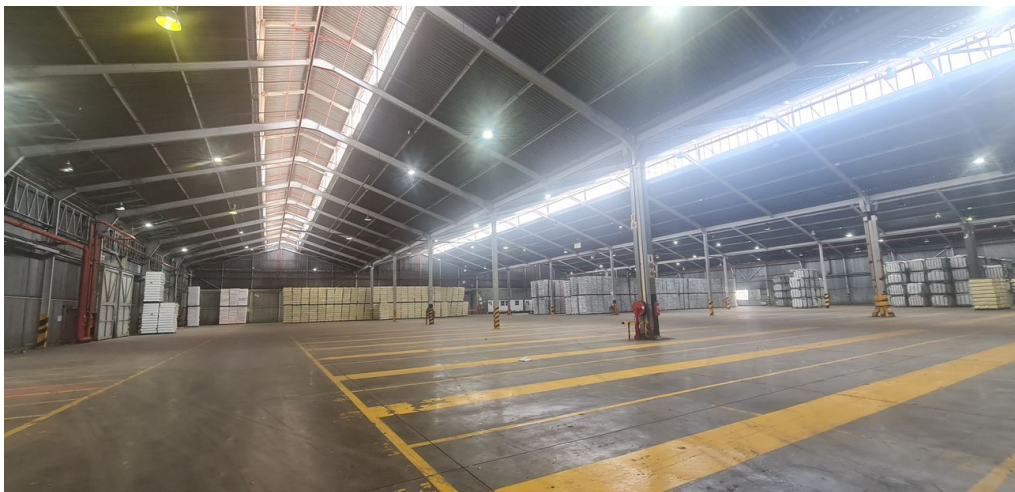
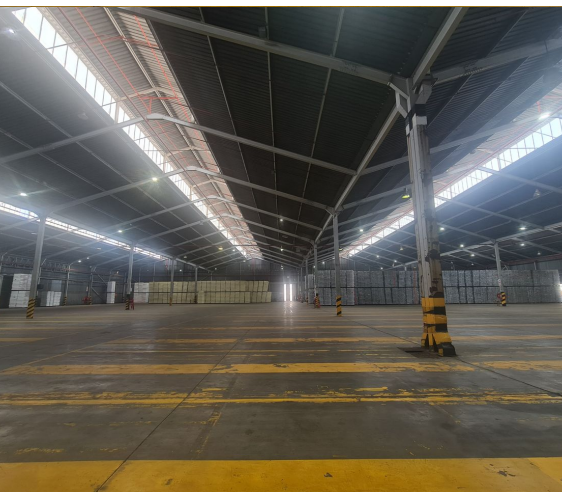


Kempton Park, Gauteng

**Massive manufacturing site
available TO LET in Isando**



This property totals 23,279sqm under roof situated on a massive stand of roughly 42,000sqm. This property boasts 4300amps of three phase power in a non-loadshedding area! The warehouse component offers a manufacturing section as well as storage with 8m to the eaves. There is great natural lighting coming into the warehouse with multiple large roller shutter doors available.

There is a large office component with multiple kitchenettes and boardrooms available. The property has excellent truck access in and around the full site with large overhangs allowing for covered loading and unloading. This property is located within close proximity to the Barbara Road offramp in Isando.

R1,163,950 PM

excl. VAT & Utilities

price per m²: R50

FEATURES

Gross Monthly Rental Available From	R1,163,950 Excl. VAT
Lease Period	Negotiable

Building Size (m ²)	23279
Land Size (m ²)	41950
Zoning	Industrial
Security	Yes

Power 3 Phase	Yes
Power Amps	4300
Air Conditioning	Yes

**WEB REFERENCE NO.
COM20350**

Go to 3cubeproperty.co.za
for more information about this property



CONTACT
MARIO GUALTIERI

☎ 076 524 5870 / (010) 3006441

✉ mario@3cubeproperty.co.za