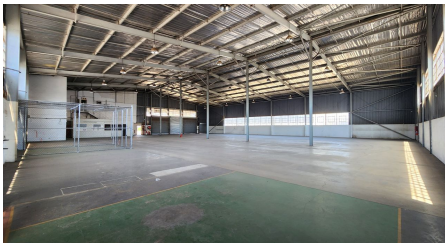


Kempton Park, Gauteng

Flexible Warehousing Facility
Available for Lease in a
Prime Isando Location



This warehouse facility for lease in the Isando industrial area of Kempton Park offers a total space of 2,500m², which includes a 1,455m² warehouse, 473.63m² of office space on the ground floor, and 496.57m² of office space on the first floor. The property features four roller shutter doors—two on-grade and two dock-level—providing flexible access options for various operations. With 3-phase power at 250 amps and a 6.9-meter height to the eaves, the warehouse offers ample space, excellent natural light, and is equipped with a sprinkler system. A yard area allows for easy truck access, and the warehouse floors are in excellent condition, suitable for racking, shelving, and forklift operations. The ground floor office area is designed with a large open-plan space, ideal for a sales environment or showroom, as well as individual offices and ablutions. The first-floor office space includes additional offices, a boardroom, an entertainment area, a kitchen, and further ablutions. The facility also offers parking for 18 vehicles, with 10 shaded parking spots and 8 open bays. Located near O.R. Tambo International Airport and major freeways (R21 and R24), this property provides convenient access to key areas such as Spartan, Edenvale, Meadowdale, and Jetpark.

R137,500 PM

excl. VAT & Utilities

price per m²: R55

FEATURES

Gross Monthly Rental Available From Lease Period	R137,500 Excl. VAT Immediately Negotiable
Building Size (m ²)	2500
Land Size (m ²)	3127
Zoning	Industrial
Security	No
Power 3 Phase	Yes
Power Amps	250
Air Conditioning	Yes

WEB REFERENCE NO.
COM22317

Go to 3cubeproperty.co.za

for more information about this property



CONTACT
KEVIN AH SING

☎ 082 225 7621 / (010) 3006441

✉ kevin@3cubeproperty.co.za