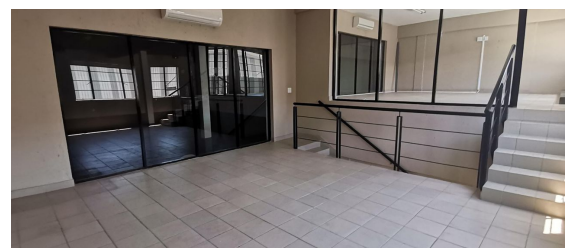
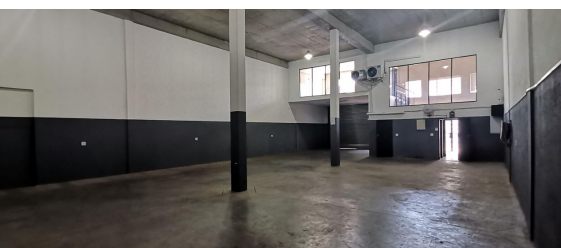




Kempton Park, Gauteng

342SQM MINI-INDUSTRIAL UNIT TO RENT IN POMONA



A perfectly located secure industrial park with a practical layout and endless opportunities for warehouse, factory, or mixed-use business needs. This unit features an open-plan warehouse area with 6 meters to the underside of the roof, neat offices on both ground and first-floor levels, a dedicated reception, and two open-plan air-conditioned sections above, complete with a kitchen and toilet facilities. The premises is move-in ready, offering 3-phase power and a large roller shutter door that ensures easy access and a versatile layout. Situated in the sought-after and rapidly expanding industrial node of Pomona, this property enjoys excellent connectivity to major arterial roads and is within close proximity to essential amenities, public transport routes, and highways, including the R21, R24, and N12. It is also just 10 minutes from O.R. Tambo International Airport, making it a central hub for surrounding industrial nodes.

R32,886 PM
excl. VAT & Utilities
price per m²: R87

FEATURES

Gross Monthly Rental Available From Lease Period	R32,886 Excl. VAT Immediately Negotiable
Building Size (m ²)	378
Zoning	Industrial
Security	Yes
Power 3 Phase	Yes
Power Amps	60
Air Conditioning	Yes

WEB REFERENCE NO. COM22519

Go to 3cubeproperty.co.za for more information about this property



CONTACT
MICHAEL LABRAM

079 353 4669 / (010) 3006441
michael@3cubeproperty.co.za