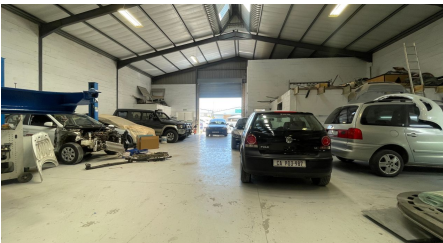
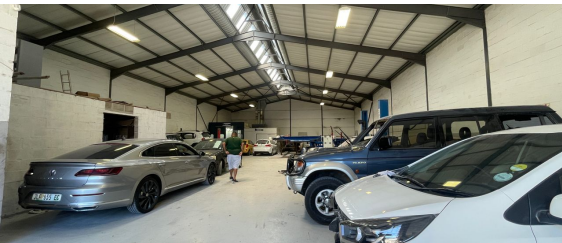


Milnerton, Western Cape

Neat and secure industrial property available for rent in Killarney Gardens, Cape Town.



Killarney Gardens, an extension of Montague Gardens, is a highly sought-after industrial hub conveniently located between the N1, N7, and Platteklouf roads, with easy access to the MyCiTi bus route for public transportation. The area is surrounded by neighbouring suburbs including Milnerton Rural, Dunoon, Richwood, and Flamingo Vlei. It is just 25 minutes away from the Port of Cape Town and Cape Town International Airport, making it an ideal location for businesses with logistical needs.

The industrial property offers a total area of 705m² and features a large roller shutter door for easy access and plenty of natural light throughout the space. It includes a reception area, first-floor office, parking, and a yard with rigid truck access. The property is slab-on-grade, providing solid flooring for industrial use. The lease details include an occupation date of 01 March 2025, with a deposit required equal to two months' rent.

R45,000 PM
excl. VAT & Utilities
price per m²: R63

FEATURES

Gross Monthly Rental Available From Lease Period	R45,000 Excl. VAT Immediately 36 months
Building Size (m ²)	705
Zoning	Industrial
Security	No
Open Parkings	8
Power 3 Phase	Yes
Air Conditioning	No

WEB REFERENCE NO. COM22446

Go to 3cubeproperty.co.za for more information about this property



CONTACT
BRADLEY WRIGHT

0829256613 / (021) 5699697
b.wright@3cubeproperty.co.za