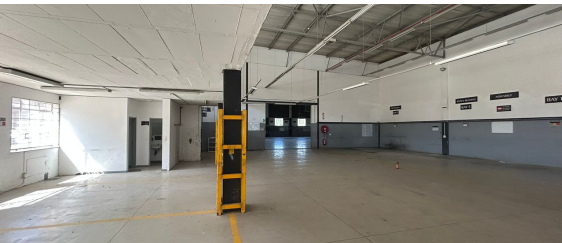
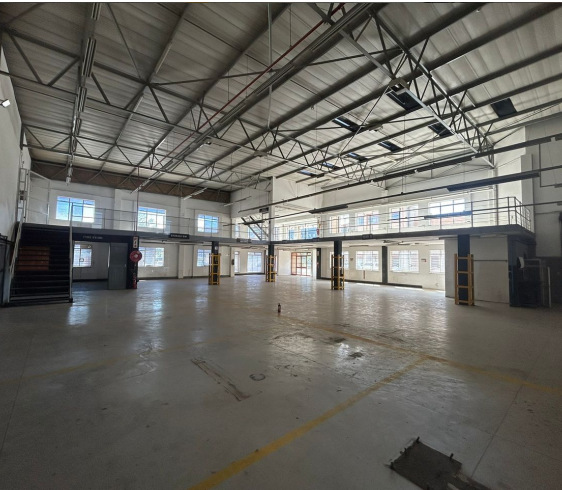


**Randburg, Gauteng**

**Industrial Warehouse To Let  
in Strijdom Park**



784m<sup>2</sup> of well-designed industrial space, perfectly suited for warehousing, distribution, or manufacturing. The warehouse features excellent height for racking or storage, an on-grade roller shutter door for seamless loading, and 3-phase power to support various operational needs. Its open layout ensures efficient workflow, while dedicated ablutions cater to both warehouse and office staff.

Strategically located within Malibongwe Exchange, the unit provides quick access to Malibongwe Drive and the N1 Highway, making logistics and transportation effortless. Ample parking and a secure environment further enhance its appeal, creating an ideal space for businesses seeking flexibility and convenience. Immediate occupation available—don't miss out!

**R63,350 PM**

**excl. VAT & Utilities**

price per m<sup>2</sup>: R80

**FEATURES**


Gross Monthly Rental Available From Lease Period	R63,350 Excl. VAT Immediately Negotiable
Building Size (m <sup>2</sup> )	784
Land Size (m <sup>2</sup> )	26020
Zoning	Industrial
Security	No
Power 3 Phase	Yes
Air Conditioning	No


**WEB REFERENCE NO.  
COM22544**

Go to [3cubeproperty.co.za](http://3cubeproperty.co.za)  
for more information about this property



**CONTACT**  
**DONOVAN AKOM**

 078 937 6084 / (010) 3006441

 [donovan@3cubeproperty.co.za](mailto:donovan@3cubeproperty.co.za)