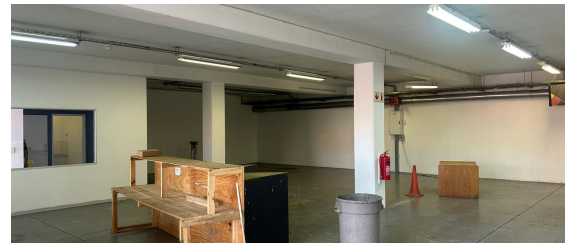
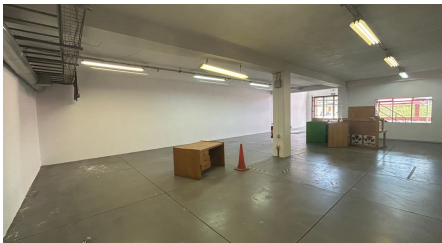
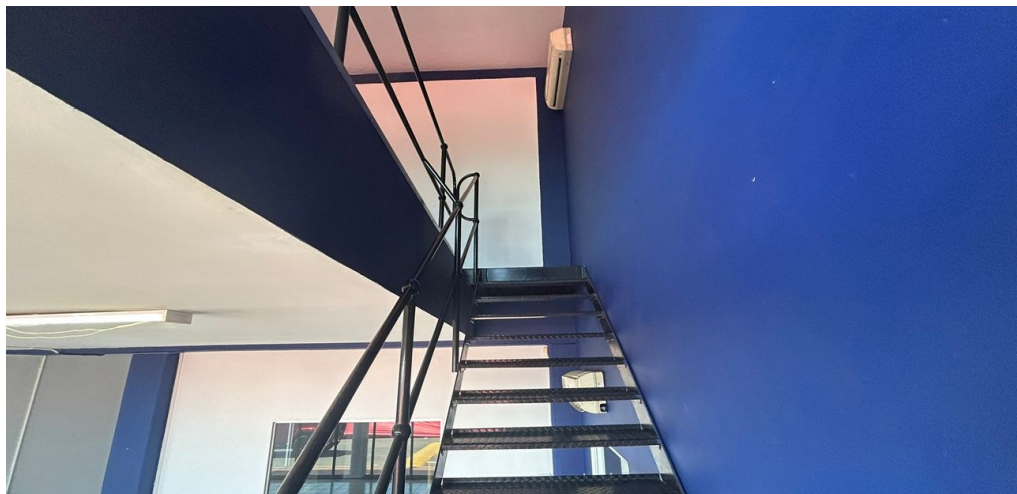




**Roodepoort, Gauteng**

**Prime 387m<sup>2</sup> Space To Let in Laser Park**



This 387m<sup>2</sup> warehouse offers a spacious and adaptable open floor plan, perfect for businesses in warehousing, light manufacturing, or hybrid operations. The layout provides flexibility to optimize your workflow, while the high ceilings and roller shutter door ensure easy access and efficient use of the space. Located in the well-connected 5 Star Junction, the property boasts direct access to main roads and nearby freeways, making logistics and transport smooth and reliable. Ample parking and easy maneuverability for trucks further enhance its practicality.

Designed with security in mind, the facility features 24-hour surveillance and controlled access, ensuring peace of mind for your team and assets. Its strategic location, combined with functional features and robust security, makes this warehouse a standout choice for businesses looking to expand or relocate. Don't miss this opportunity—schedule a viewing today and secure a space designed to support your success!

**R27,090 PM**

**excl. VAT & Utilities**

price per m<sup>2</sup>: R70

### FEATURES


Gross Monthly Rental Available From Lease Period	R27,090 Excl. VAT Immediately Negotiable
Building Size (m <sup>2</sup> )	387
Zoning	Industrial
Security	Yes
Power 3 Phase	Yes
Air Conditioning	Yes


WEB REFERENCE NO.  
**COM21675**

Go to [3cubeproperty.co.za](http://3cubeproperty.co.za)  
for more information about this property



**CONTACT**  
**DONOVAN AKOM**

 078 937 6084 / (010) 3006441

 [donovan@3cubeproperty.co.za](mailto:donovan@3cubeproperty.co.za)