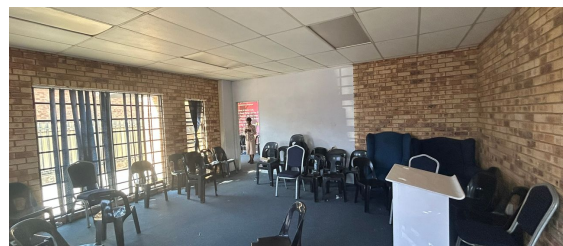
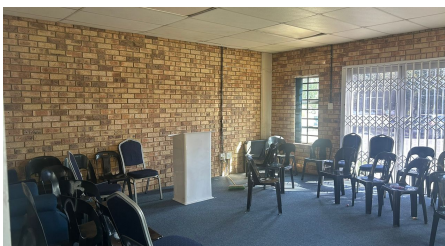




**Roodepoort, Gauteng**

**Versatile 600m<sup>2</sup> Industrial Warehouse To Let in Laser Park**



This spacious 600m<sup>2</sup> property is perfectly suited for a range of industrial uses. With its open-plan design, it offers flexibility for manufacturing, storage, or distribution needs. The facility includes a reception area, kitchen, and bathrooms, ensuring convenience for your staff and operations.

Conveniently located with excellent transport access, ample parking, and secure 24-hour access control, this warehouse combines accessibility with safety. Equipped with three-phase power, it's ready to support various industrial applications. Don't miss out on this prime space for your business. Contact us today to schedule a viewing!

**R45,000 PM**  
**excl. VAT & Utilities**  
price per m<sup>2</sup>: R75

**FEATURES**

Gross Monthly Rental Available From	R45,000 Excl. VAT
Lease Period	Feb. 1, 2025 Negotiable
Building Size (m <sup>2</sup> )	600
Zoning	Industrial
Security	Yes
Power 3 Phase	Yes
Air Conditioning	Yes

**WEB REFERENCE NO. COM21693**

Go to [3cubeproperty.co.za](http://3cubeproperty.co.za) for more information about this property



**CONTACT**  
**DONOVAN AKOM**

☎ 078 937 6084 / (010) 3006441

✉ [donovan@3cubeproperty.co.za](mailto:donovan@3cubeproperty.co.za)