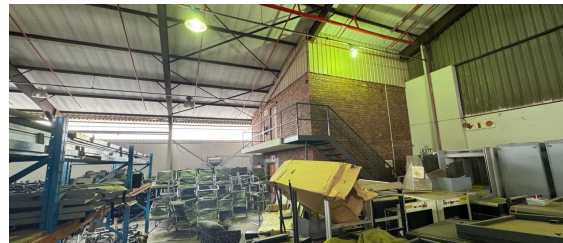
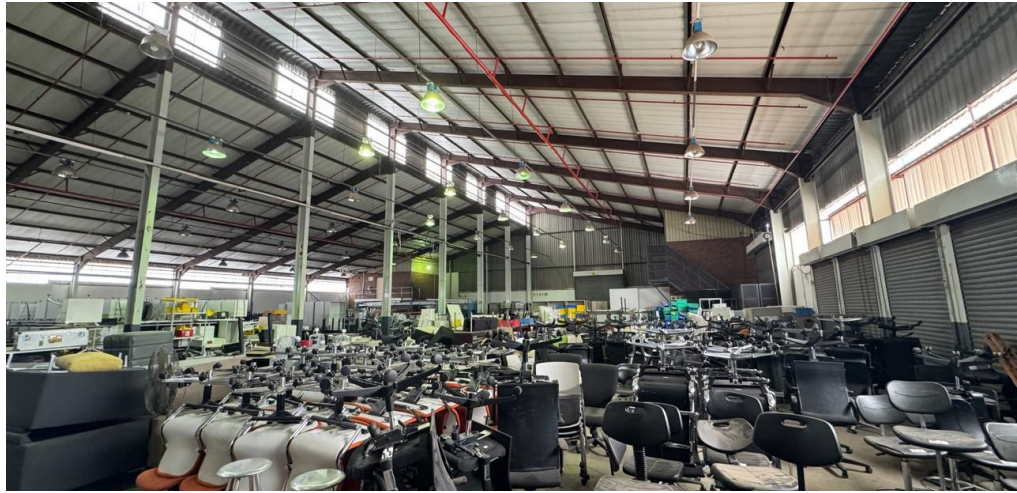




Roodepoort, Gauteng

Industrial Property to Let in Robertville



Prime 3,222m² Industrial Facility in Secure Robertville Park – Available March 2025!

This exceptional industrial property, spanning 3,222m², will be available for lease from March 1, 2025. Situated within a secure industrial park in Robertville, the facility is thoughtfully designed to support efficient operations and logistics.

The warehouse boasts an open-plan layout, excellent eave height for maximized storage capacity, and 10 well-placed roller shutter doors for streamlined access. With 3-phase power and a fully integrated sprinkler system, the property adheres to top-tier industrial standards.

Complementing the warehouse is a double-volume office component, featuring a welcoming reception area, multiple private offices, spacious boardrooms, training rooms, staff canteens, and kitchenettes. Separate ablution facilities for office and warehouse staff ensure convenience and comfort for your team.

Ample space for truck articulation further enhances the property's functionality, making it an ideal choice for businesses seeking a versatile and secure industrial solution.

R177,210 PM

excl. VAT & Utilities

price per m²: R55

FEATURES

Gross Monthly Rental Available From
R177,210 Excl. VAT
March 1, 2025
Lease Period 24 months

Building Size (m²) 3222
Zoning Industrial
Security Yes

Power 3 Phase Yes
Power Amps 80
Air Conditioning No

WEB REFERENCE NO.
COM21616

Go to 3cubeproperty.co.za
for more information about this property



CONTACT
JONATHAN HOP HING

0687522879 / (010) 3006441

jonathan@3cubeproperty.co.za